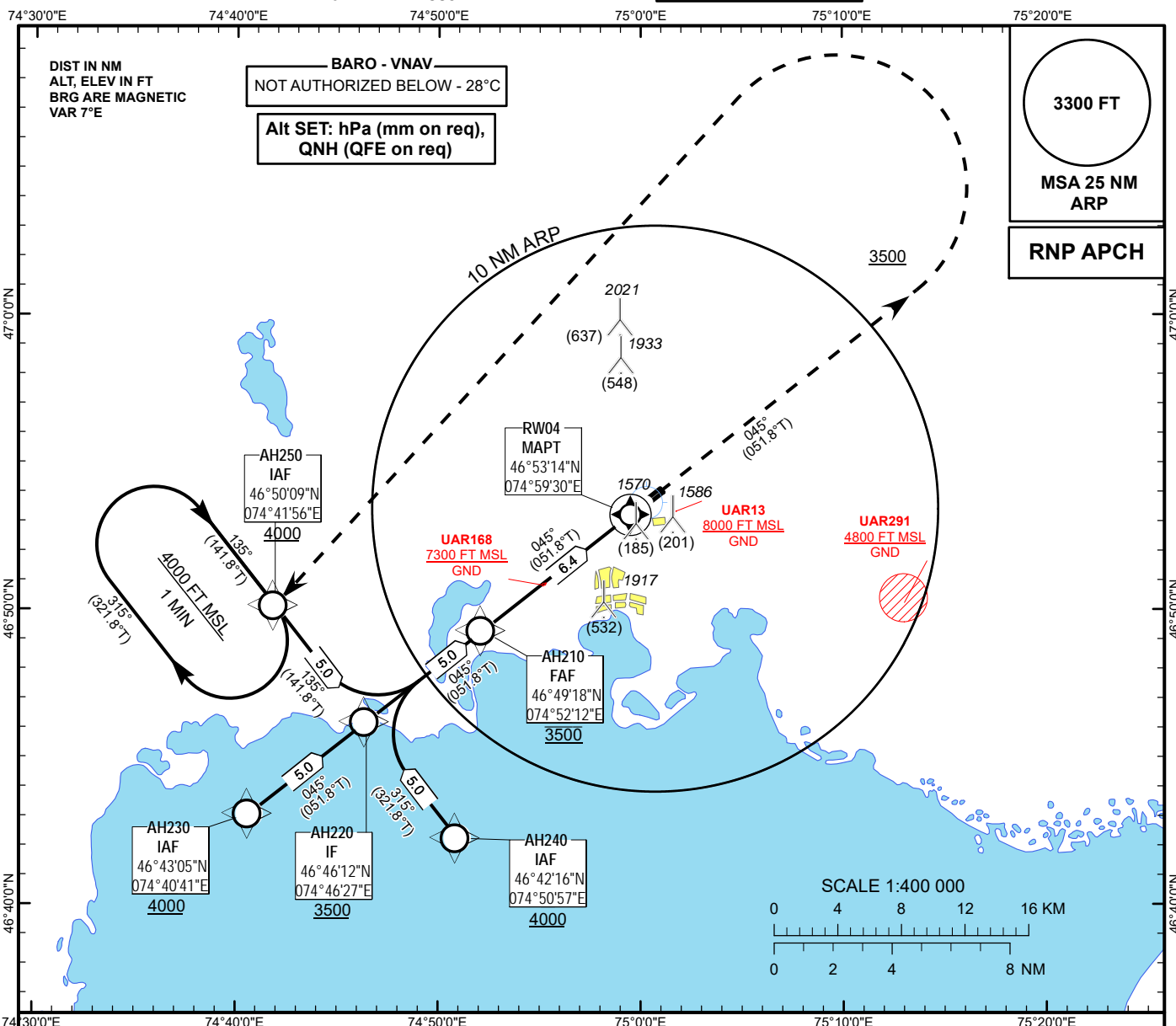


INSTRUMENT
APPROACH
CHART - ICAO

AERODROME ELEV **1447FT**
HEIGHTS RELATED TO
THR RWY 04 - ELEV **1385FT**

BALKASH TOWER 128.0
BALKASH ATIS (EN) 126.6
BALKASH ATIS (RU) 126.2

BALKHASH
RNP RWY 04



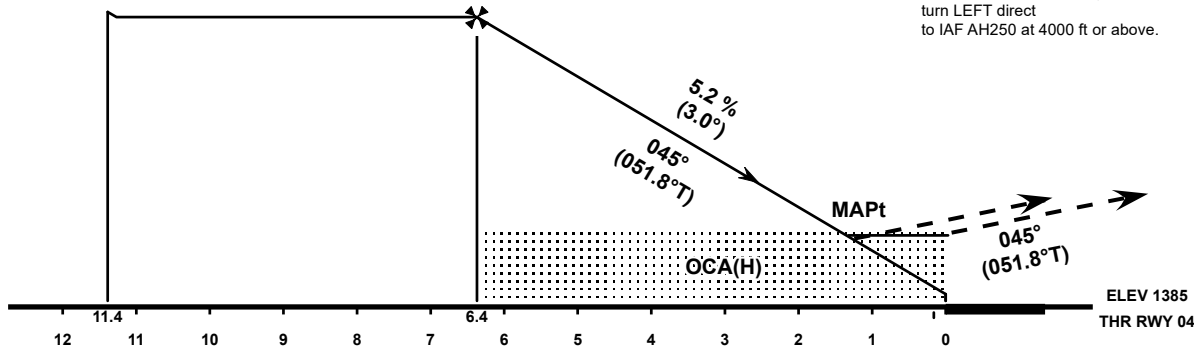
IF
AH220
3500

FAF
AH210
3500

TRANSITION ALT 10000 FT

MISSED APPROACH:

On course 045° M
climb to 3500 ft or above,
turn LEFT direct
to IAF AH250 at 4000 ft or above.



OCA(OCH)		A	B	C	D
Straight	LNAV	1820(440)			
	LNAV/VNAV	1701(316)	1711(326)	1721(336)	1730(346)

DIST THR	6	5	4	3	2
ALTITUDE	3340	3030	2710	2390	2070
HEIGHT	1960	1640	1320	1000	690

GS	kt	80	100	120	140	160	180
Rate of descent	ft/min	420	530	640	740	850	960
FAF/FAP - THR (6.4 NM)	min:s	4:47	3:49	3:11	2:44	2:23	2:07

TABULAR DESCRIPTION

RNP RWY04											
Serial Number	Path Descriptor	Waypoint Identifier	Fly - over	Course °M(°T)	Magnetic Variation(°)	Distance (NM)	Turn Direction	Altitude (FT)	Speed (KT)	VPA (°)	Navigation Specification
010	IF	AH230	-	-	+7.1	-	-	+4000	-	-	RNP APCH
020	TF	AH220	-	045(051.8)	+7.1	5.0	-	+3500	-	-	RNP APCH
010	IF	AH240	-	-	+7.1	-	-	+4000	-	-	RNP APCH
020	TF	AH220	-	315(321.8)	+7.1	5.0	-	+3500	-	-	RNP APCH
010	IF	AH250	-	-	+7.1	-	-	+4000	-	-	RNP APCH
020	TF	AH220	-	135(141.8)	+7.1	5.0	-	+3500	-	-	RNP APCH
010	IF	AH220	-	-	+7.1	-	-	+3500	-	-	RNP APCH
020	TF	AH210	-	045(051.8)	+7.1	5.0	-	@3500	-	-	RNP APCH
030	TF	RW04	Y	045(051.8)	+7.1	6.4	-	@1435	-	-3.0	RNP APCH
040	CA	-	-	045(051.8)	+7.1	-	-	+3500	-	-	RNP APCH
050	DF	AH250	-	-	+7.1	-	L	+4000	-	-	RNP APCH

WAYPOINT COORDINATES

RNP RWY04		
Waypoint Identifier		
Coordinates		
AH210	464918.00N	0745212.00E
AH220	464612.00N	0744627.00E
AH230	464305.00N	0744041.00E
AH240	464216.00N	0745057.00E
AH250	465009.00N	0744156.00E
RW04	465314.28N	0745929.84E